



Family Physicians Inquiries Network Member Newsletter

YOUR SUCCESS IS OUR COMMITMENT

As we prepare for the new academic year upon us, there is new and exciting information to share with you; our staff has grown. Our goal is to expand our availability to members, customize resources for programs, and expand educational offerings through the FPIN Institute online modules and onsite workshops. Your FPIN point-of-contacts and champions will soon be receiving invitations for 1:1 implementation calls to set goals for the upcoming year. Don't forget, as you begin planning training workshops for your new residents, we are here to assist with customized presentations. We have a variety of podcasts, tutorials, checklists, and tools that you might find useful as well. Please don't hesitate to call upon your FPIN team when in need of resources for your writing projects and curricula.

FPIN INSTITUTE-ONLINE EDUCATION

Have you seen the growing FPIN Institute? Check out what you're missing! More modules are continually being added to help you step by step from start to completion of your project. The FPIN Institute is dedicated to creating relevant, transformative, and applicable resources. You may also access a variety of PowerPoint presentations, podcasts, instructional documents, handouts, and quizzes.

Some of the modules you will find under HelpDesk Answers are:

- Introduction to HDA's
- Dissecting the Clinical Question
 - Conducting a Smart Search
 - Synthesizing the Evidence
 - Synthesizing the Statistics
 - Write it Right



www.fpin.org/page/FPINinstitute



INSIDE THIS ISSUE

- Scholarship Reports ..2
- New Reports.....2
- FPIN on the Road.....2
- New Team Members ..2
- FPIN Case Studies...2-3
- Membership Pkgs.....4
- PURLs4

Contact Us

FPIN
409 W Vandiver
Building 4, Suite 202
Columbia, MO 65202
573-256-2066 Phone
573-256-2078 Fax
membership@fpin.org

Visit Us

www.FPIN.org



ONLINE
CLINICAL
SCHOLARSHIP
EDUCATION

NEW REPORTS

Semi-annual scholarship reports assist you in tracking the progress of your program. To meet the demand of our members, we introduced many long-awaited improvements including:

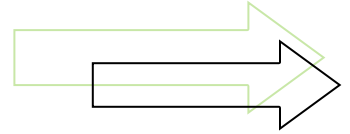
- Detailed status of each project
- Specific actions needed and/or strategies recommended
- Sign-up date showing length of time in progress

FPIN ON THE ROAD

FPIN is traveling, let us know if you want to schedule a meeting when we are in your community:

Week of June 12	Kansas City, MO
Week of July 3	Savannah, GA & Jacksonville, FL
Week of July 24	Fort Smith, AR
Week of Aug 14	New York, NY
Week of Aug 21	Peoria, IL
Week of Sept 4	Chicago, IL
Week of Oct 23	Boston, MA

CASE STUDY FOCUS: STRATEGIC IMPLEMENTATION

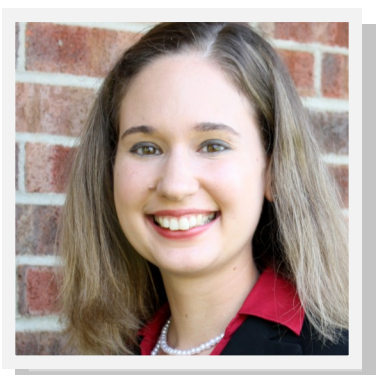


FPIN assists family residency programs in the development of evidence-based medicine curriculum and publication projects. We have helped many programs meet the scholarly activity requisite and manage the time constraints of a busy residency program. Our “Implementation Workshop” presented at national conferences this year highlighted four very different programs. Let us introduce you to these four programs. The full PowerPoint presentation can be viewed at www.fpin.org/page/membershipresources.

GEORGETOWN-Peer Pressure Works!

Georgetown University Hospital known for producing *American Family Physician*, why FPIN? Dr. Michelle Roett saw an opportunity for faculty and residents to build on what they were doing, and, to enhance evidence-based medicine curriculum within their Family Medicine Residency program. They made an FPIN writing project a requirement for 2nd year residents, and incorporated it into existing journal club timelines. This program had lots of resistance but encouraged dialogue, requested feedback, and made changes to make it work for their program. They used slide presentations, handouts from the FPIN website to teach EBM principles, evaluated progress and addressed deficits. Then, Georgetown posted the accomplishments on a “Faculty Authoring Team” bulletin board for all to see. **Peer Pressure Works!**

*FPIN is proud to announce our newest team members, listed from left to right:
Sondra Betz, Membership Coordinator; Sarah Hicks, eMedRef Project Manager;
and Kaitlyn Dodds, Librarian Editor*



UNIVERSITY OF WASHINGTON—A Developing Fellowship

The University of Washington Family Medicine Residency Network (WWAMI Network) is an affiliation of 18 residency programs. The WWAMI network, with the help of Dr. Chris Vincent, directs a faculty development fellowship, during which faculty learn to write Clinical Inquiries (CIs). The fellows attend 5 one-week seminar sessions from July through May.

The goal of the fellowship is to equip faculty with tools to find and analyze medical evidence, and to increase the number of peer-reviewed publications. The biggest barriers are lack of time and motivation. The solution to the time barrier is three hours of protected time during three fellowship weeks. For motivation, authors are reminded this is a requirement, and are shown colleagues' published articles.

Patience and persistence are key. Analytical skills and biomedical statistical knowledge don't come easy, and must be taught, nurtured, and encouraged. Fellows take what they have learned about CIs and teach others at their residency programs, leading to more publications. Persistence will pay off—last year the WWAMI network published 16 CIs. The same 5 one-week seminar sessions can be implemented at any program, with any of the FPIN writing projects.



PENSACOLA NAVAL HOSPITAL— Improving Clinical Scholarship

Through his previous training and publication of five Clinical Inquiries, Dr. Tim Mott was hired as the Program Director of the Pensacola Naval Hospital to help build an effective scholarship program. Though funding did not provide a challenge, integration did. As a military program, one of their unique challenges to the completion of writing projects is deployment. The first year with FPIN showed slow gains, resulting in the necessity of a fast-track plan to transform the trajectory. Therefore, Dr. Mott requested an onsite workshop from FPIN, presented by Dr. Corey Lyon. The workshop served as a catalyst in the implementation process. Previously, scholarly activity was not Pensacola's strong suit. Now, their reputation is changing and they are becoming known for superior scholarship performance.

- Increased publications from 1 in their first year without an onsite workshop, to 7 publications in process since their Onsite Workshop in September 2010
- Planning second home-grown workshop already
- Transforming their reputation for scholarship performance

Publications in Process



- 2009, published before the workshop
- 2010, in process from the workshop
- 2011, in process now

LSU-LAKE CHARLES— Nothing Worked Until ... FPIN!

Lake Charles is a community based program affiliated with LSU. Dr. Alan LeBato attended an FPIN workshop because their statewide department mandated FPIN membership. After three years of involvement and seeing intrinsic value in the education FPIN offers, he champions for FPIN membership.

Before FPIN, Lake Charles worked with pharmaceutical companies on sponsored studies, but couldn't get buy-in from the residents. They also worked independently on research projects, but found more barriers than the projects were worth.

Dr. LeBato completed an HDA and recruited five full-time faculty to coauthor with graduating seniors. There were many challenges LSU faced: adherence to timelines, lack of protected time and realistic expectations. The rewards were the residents learning the art of literature searches, analyzing data, and fulfilling RRC requirements. The unexpected benefits were faculty/resident mentoring relationships and reporting activity from FPIN. The bottom line—nothing worked until FPIN!



FPIN Consortium
409 West Vandiver Drive
Bldg. 4 Ste. 202
Columbia, MO 65202



ALL NEW FOR THE UPCOMING ACADEMIC YEAR:

**30% Discount on an Onsite
Workshop with your FPIN
membership renewal.**

Programs that use the Onsite Workshop as their implementation strategy yield faster results by alleviating the self-study pitfalls & learning curve. Workshop Pricing with FPIN Renewal:

\$2400 Staff-Led, \$600 savings!

\$4100 Faculty-Led, \$900 savings!

Let us know if you would like a quote with your renewal invoice.

We still have dates available for September, October, January, and February.

DIVING FOR PURLS

We are thrilled to introduce FPIN's newest publication series, *Diving for PURLs*, a monthly feature published in *Evidence-Based Practice*. You may already be familiar with the *Priority Updates from the Research Literature (PURLs)* published in *The Journal of Family Practice*. In the PURLs series, we attempt to select and summarize all new research studies that should change your practice.

Diving for PURLs provides you with a synopsis of important studies that may not meet all of our PURL criteria (relevant, valid, change in practice, implementable in most medical care settings and meaningful). They may still change your individual practice or they may be research studies that you hear about from your patients or the media. We find that about one in five studies that we select for intensive review meet all criteria for a PURL. Articles that do not meet all PURL criteria are still useful to our individual practices or helpful to support dialogue with our patients. Diving for PURLs is our attempt to share with you what we learn through this rigorous, continuous process.



For more information about becoming involved with the PURLs project, please contact Cortni Cross at Cortni@fpin.org.